

# Connecting P2, EMS and Regulatory Affairs Management – a case study of the distilled spirits sector

Presented by: Raegan Bunker, IndEco Strategic Consulting Inc.

Canadian Pollution Prevention Roundtable

Calgary, June 12<sup>th</sup> 2003

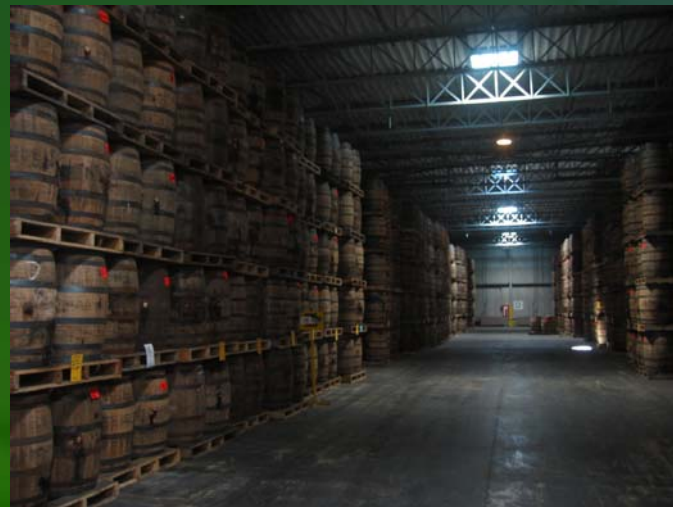
# Presentation overview

---

- Background
  - *Distilled spirits industry*
  - *Changes in emissions reporting requirements*
- Case study
  - *Approach adopted and key outcomes*
  - *Integration of EMS and P2*
- Lessons learned
- Benefits of integration
- Opportunities for further integration

# Distilled spirits industry

- Small and medium sized companies
- Over 14 million cases sold in Canada in 2002
- Over 500 domestic and 2000 international brands available
- Directly and indirectly generates more than \$2.6M worth of economic activity (1996)
- National industry association – Spirits Canada



# Emissions reporting changes

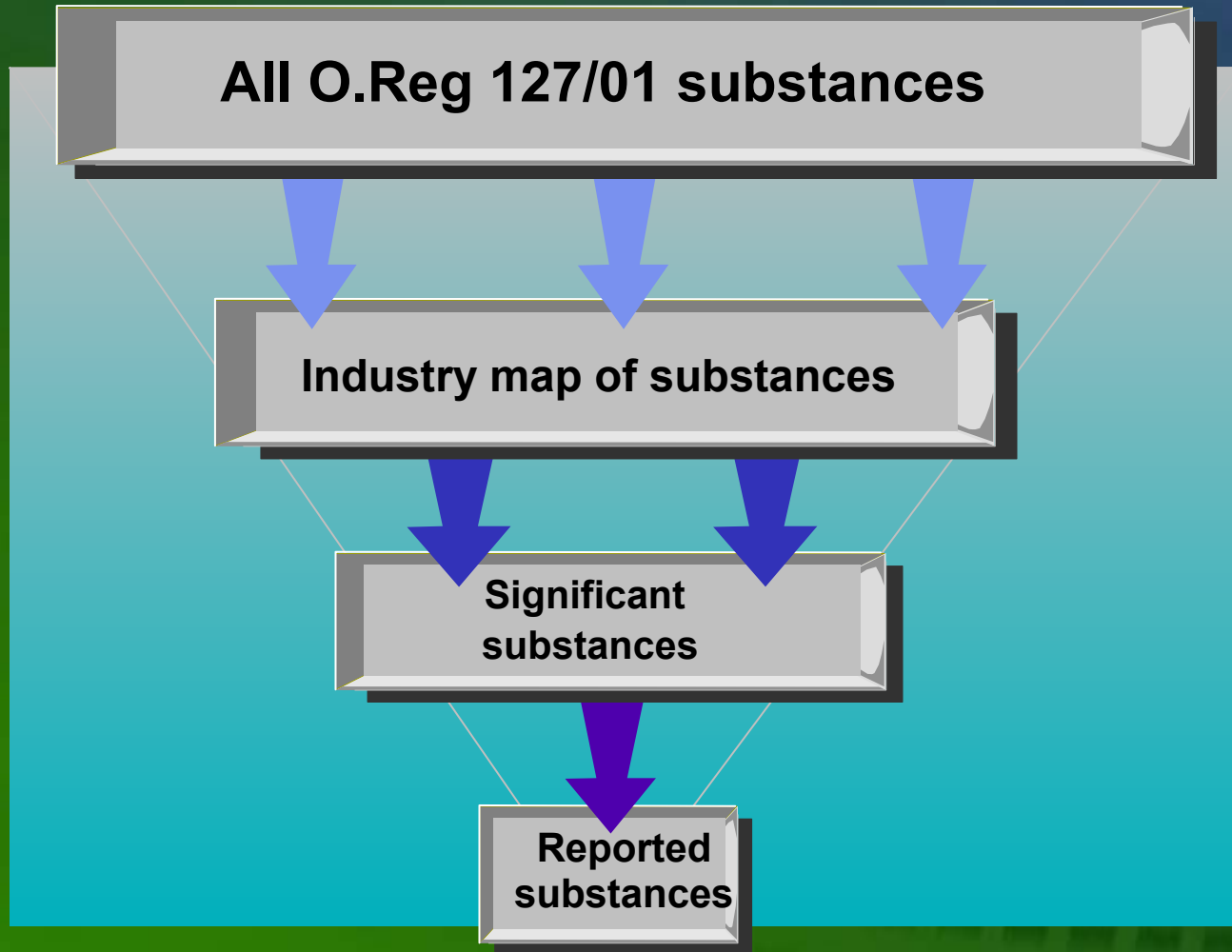
- Distilled spirits facilities faced new emissions reporting regulations/requirements in 2002:
- Ontario Regulation 127/01
  - *358 substances*
  - *Air releases only*
  - *Annual and smog season reporting requirements, based on thresholds and screening criteria*
- National Pollutant Release Inventory (NPRI)
  - *273 substances*
  - *Releases to all media and transfers*
  - *Annual, quarterly and monthly reporting requirements, based on thresholds*
  - *Many facilities submitting reports for first time in 2003 due to addition of criteria air contaminants (CACs)*

# Spirits Canada Work Group

- Spirits Canada Work Group (SCWG) formed to develop a common responsible approach to compliance, including:
  - *Common list of inputs, processes and outputs for the industry*
  - *Emission estimation methods*
  - *Methodology for narrowing number of emissions to be estimated annually*



# SCWG - approach



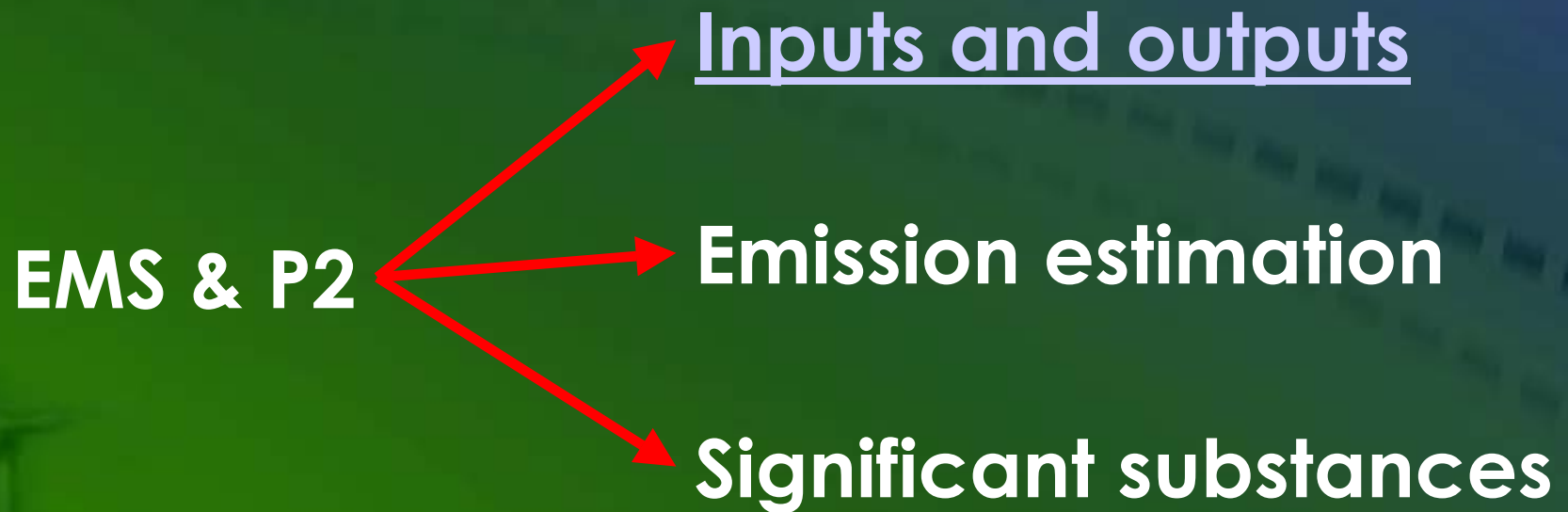
# SCWG - key outcomes



- Consistent and comprehensive sector-based approach to compliance
- Reduction in number of substance emissions to estimate annually from 358 to less than 20
- SCWG Emissions Calculator™

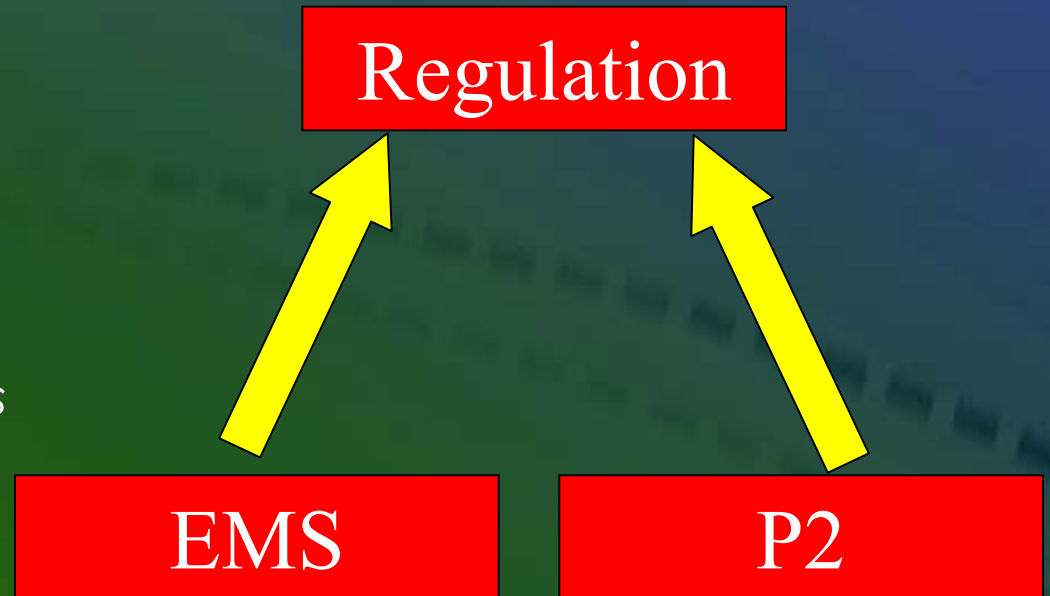
# How EMS and P2 data were used

---



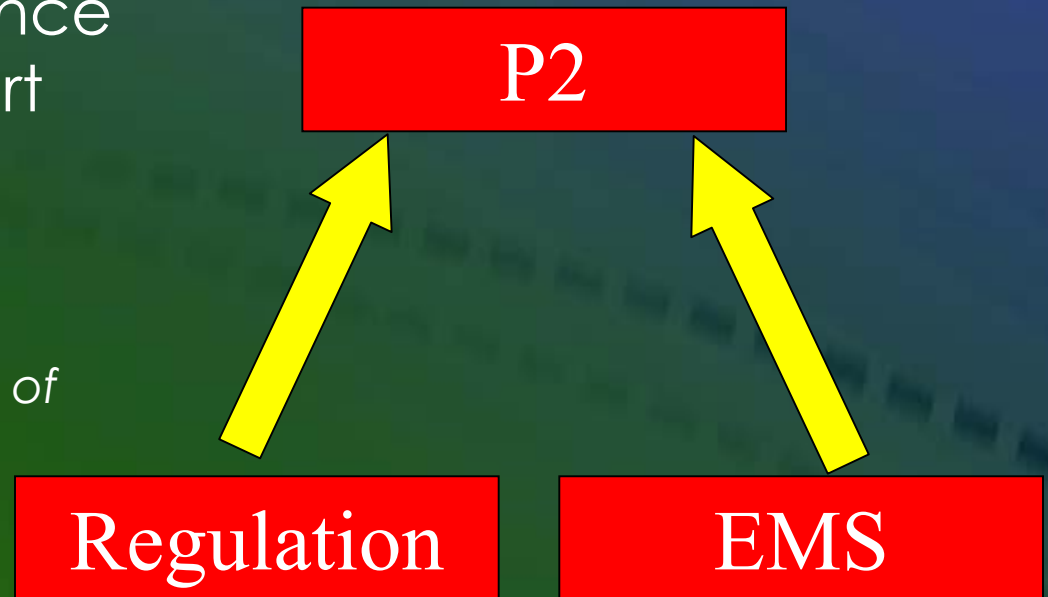
# Lessons learned

- P2 and EMS can support regulatory compliance
  - *Inputs and outputs*
  - *Emissions factors*
  - *'Significant' substances*



# Lessons learned (cont'd)

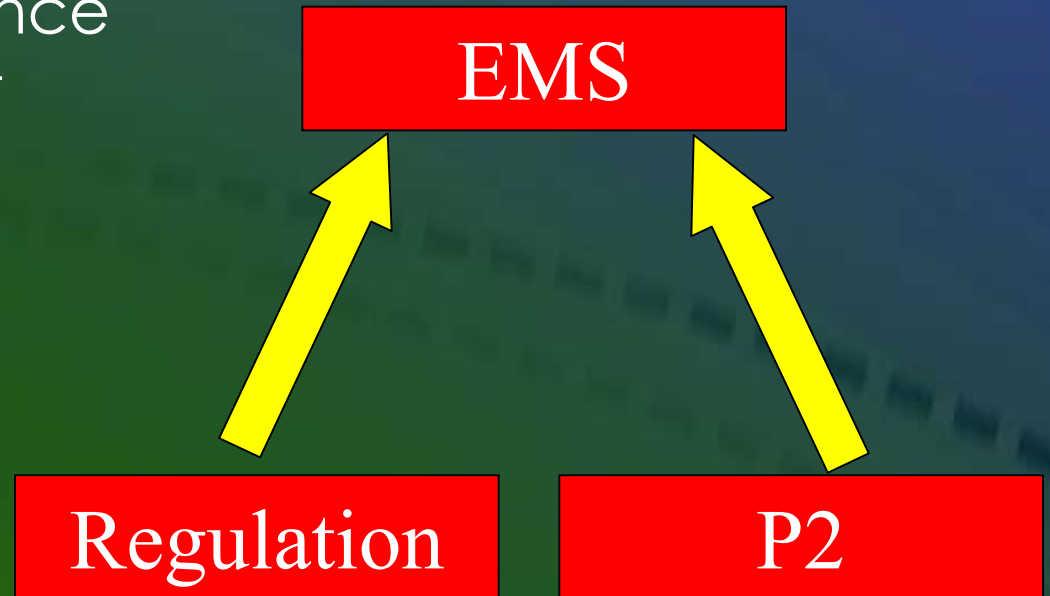
- Regulatory compliance and EMS can support P2
  - *Information & best-practices exchange*
  - *Greater understanding of sector emissions and opportunities for P2*



“A more holistic approach [to P2] will be taken, looking at the industry practices and the impact an activity will have on our business.” (BACARDI CANADA INC.)

# Lessons learned (cont'd)

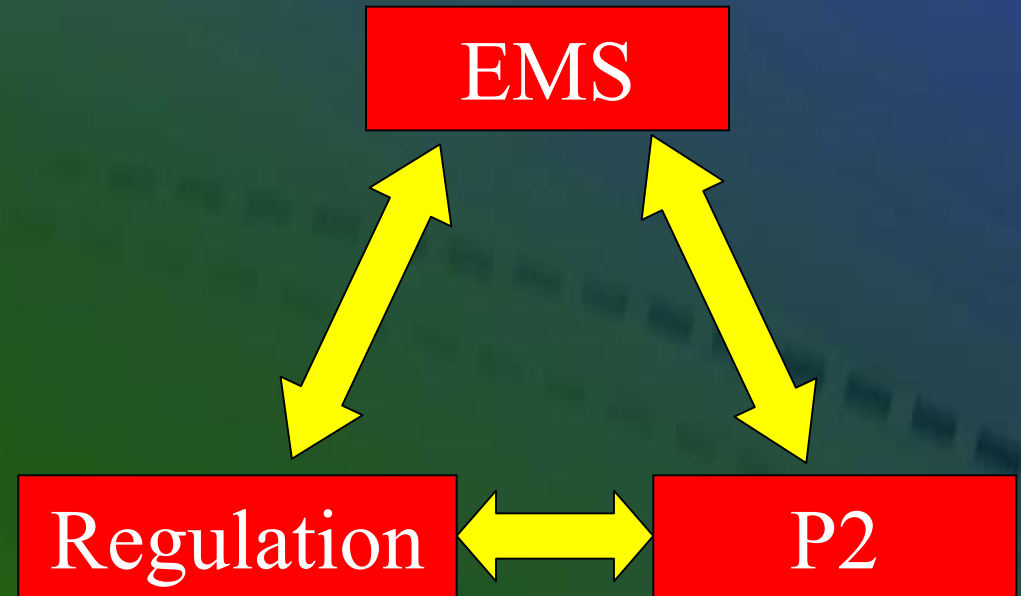
- Regulatory compliance and P2 may support EMS
  - *Impacts and aspects*
  - *Legal and other requirements*



“The process also helped to ensure that BCI’s list of Activities, Aspects & Impacts included all sources of emissions.” (BACARDI CANADA INC.)

# Conclusions

- Benefits of integration:
  - *Save time/money*
  - *Improve results*
  - *Identify opportunities*
  - *Change value of existing initiatives*
  - *Information exchange*
- Opportunities for further integration



# Thank you!

---

For more information, please contact:

**Raegan Bunker**

**IndEco Strategic Consulting Inc.**

2 Pardee Avenue, Suite #302

Toronto, ON M6K 3H5

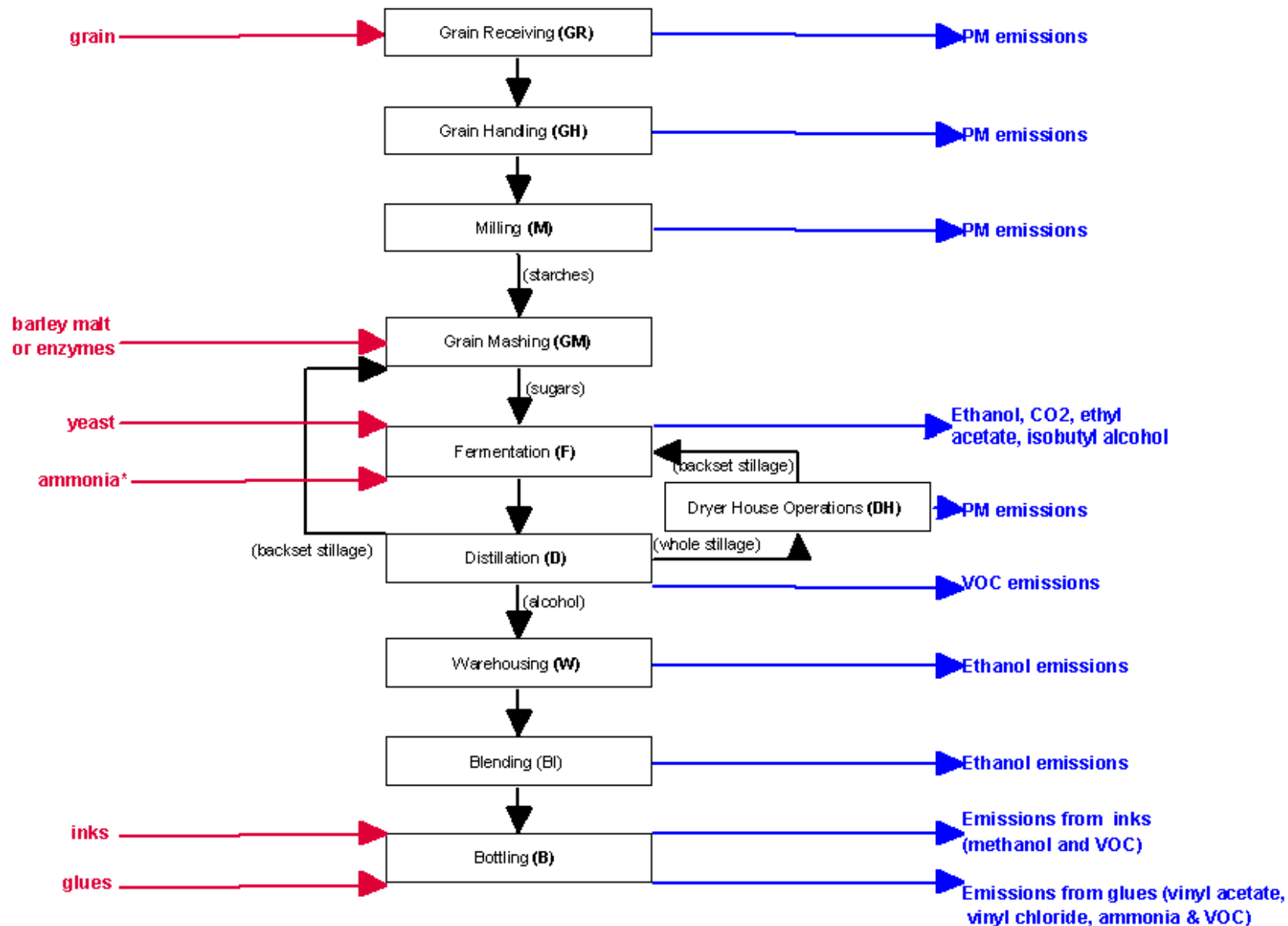
Canada

📞 416 532-4333

✉ [rbunker@indecocom](mailto:rbunker@indecocom)

🌐 [indecocom](http://indecocom)

# Production processes



\*not applicable to all facilities